

QUICK  
POSSESSION

# THE JEFFERSON

2,343SQ FT | 3 BED | 2.5 BATH

97 ROYAL STREET



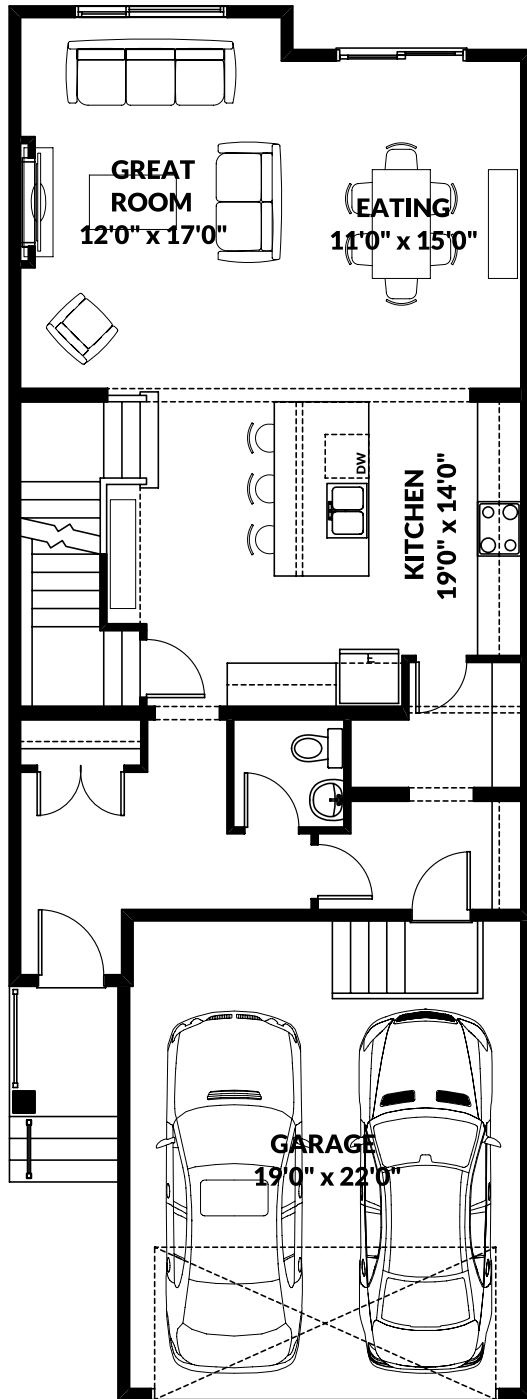
## THIS FRONT DRIVE HOME FEATURES

- Upgraded ensuite with glass wall shower.
- Upper floor laundry.
- Built in bench and hooks in mudroom.
- Pot & pan drawers in kitchen.
- Glass door cabinets flanking the range hood.
- Tile fireplace surround.
- Black plumbing and hardware package.

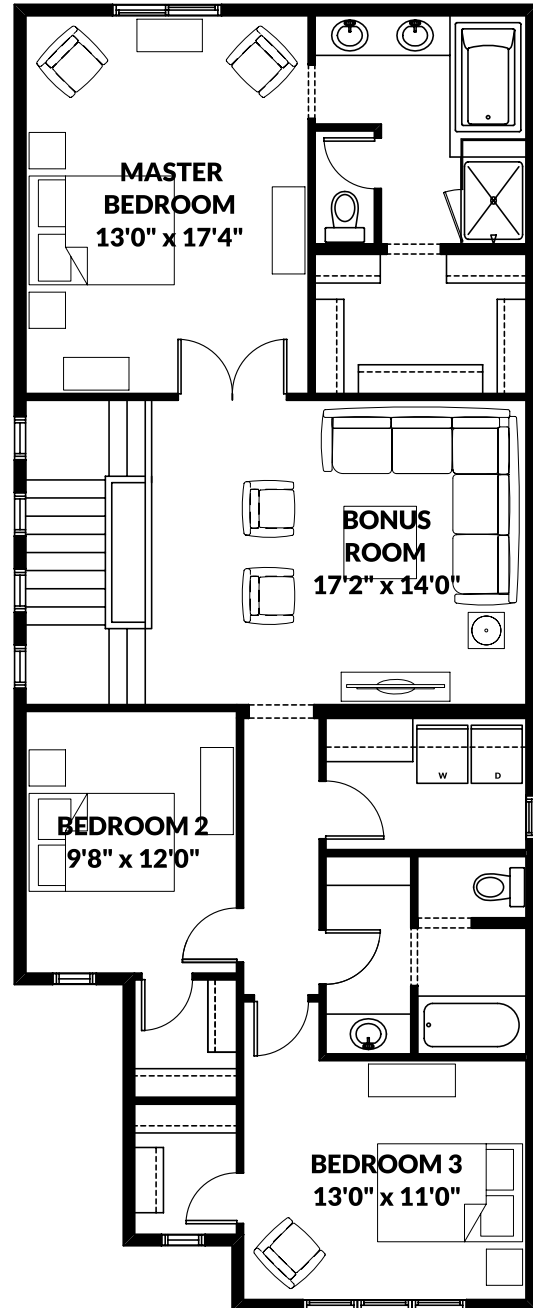
BETTER VALUE BY DESIGN  
SINCE 1978 | HOMESBYAVI.COM

Homes by **AVI**

# FLOOR PLAN



**MAIN**  
1,003 SQ FT



**UPPER**  
1,340 SQ FT

For more information or to book an appointment please contact us at **587.525.5202**

Prices are subject to change without notice. Actual floor plan, elevation, and square footage may not be exactly as shown. Square footage is measured to Alberta Building Code (ABC) regulations. Builder reserves the right to make changes without notice. E&OE.

Homes by **AVI**